



UNITED WAY  
OF OLMSTED COUNTY

ANNUAL REPORT 2017





# BE BOLD, LIVE UNITED

A single mother struggling to find day care and provide opportunities for her children.

A family coping with a mental illness.

A senior citizen striving to remain independent.

Each of these people, and the thousands more like them, wants – and deserves – the opportunity to achieve their dreams, support their family and live with dignity. Over 90 years of local experience, in conjunction with the experiences of our national United Way network, teaches us that community-wide solutions offer the best chance of helping them succeed.

That's why we join together to come alongside of individuals and families in need. We are stronger when we Live United. Together, we are fighting harder than ever to build stronger lives, stronger families and a stronger community that allows everyone to reach their potential.

United Way goes beyond single-issue solutions and temporary fixes. Our community impact strategies focus on ensuring children are prepared for school, youth develop skills and abilities they need to thrive in the job market, and people of all ages have an opportunity to improve their economic status and live a healthy life.

By ensuring that everyone has access to these interconnected building blocks of life, we strengthen all facets of society –

empowering individuals and communities through holistic solutions. We do it by mobilizing the best resources and forging partnerships. We find solutions tailored to the challenges of our ever-changing world.

Our solutions are based on local needs – ensuring they make a defining impact in homes, schools and workplaces right here in Olmsted County. The evidence of our work is pervasive and is highlighted throughout this annual report.

This fight is joined by partners from every sector of society. We foster relationships and build trust between companies, government agencies, nonprofits and individuals to bring all voices and stakeholders to the table.

Within this report, you will find more examples of our results driven by our impact agenda. Most importantly, you will be reminded that for every program, every new initiative and every dollar raised, individual lives have been changed forever.

Our community will evolve – and United Way will continue to adapt alongside it – but no matter the time or place, people are being touched because communities are choosing to come together.

That's the power of community building. That's what it means to LIVE UNITED. To all our partners, donors and volunteers, thank you for everything you do.

# THE UNITED WAY

---



## HISTORY

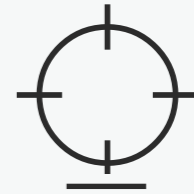
United Way of Olmsted County was established in 1925 as a community chest fund, and has emerged over the past two decades as a community impact organization. The development of the community impact model is the product of a long history that has built upon nearly a century of work to help create a better, stronger and more vibrant community in Olmsted County. Through its entire 90 year history, working together in support of people in need has been the central focus.



## MISSION

**Uniting people and resources to improve people's lives in our community.**

There is boldness in all of us. And when we LIVE UNITED we can take on the critical problems in our community. In the right circumstances we can ignite that boldness to pull ourselves up and extend a hand to someone else. By providing people the tools to succeed, we can do more than help one person overcome the odds. Because BOLDLY we unite. UNITED we fight for individuals in need, and UNITED we win for ALL.



## VISION

**To be an agent of community change that inspires hope, creates opportunity, and champions people in need.**

We win by living UNITED. By forging unlikely partnerships. By finding new solutions to old problems. By mobilizing the best resources. And by inspiring individuals to join the fight against our community's most daunting social crises. No matter the odds, we surround a problem, and we fight to win—with results to show for it. We have one life. To live better we must be BOLD, we must LIVE UNITED.

# OUR YEAR IN REVIEW



**41,262**

TOTAL NUMBER OF OLMSTED  
COUNTY COMMUNITY  
MEMBERS SERVED



**14,915**

CHILDREN AND  
YOUTH SERVED

1,597 youth were served through our  
partnership with Community Schools



**8,475**

PEOPLE WITH IMPROVED  
HEALTH AND WELLNESS



**30,474**

PEOPLE WITH INCREASED  
STABILITY (INCOME +  
BASIC NEEDS)

## A YEAR TO BE BOLD

As highlighted throughout this report, last year was another very active and productive year at United Way of Olmsted County. By connecting thousands of donors and volunteers throughout our community with strategies grounded in research, we have once again improved lives of people in need and helped make our community a better, healthier place.

All of us want to live in thriving communities with quality education, good health, and strong financial stability – where everyone reaches their potential.

Thank you for being a significant part of our community and for your contributions to United Way.

# UNITED WAY'S COMMUNITY IMPACT



## KNOWLEDGE + SKILLS

When children and youth have strong, stable learning and growing environments, they can be more successful in achieving lifelong success and reaching their potential.



## A HEALTHY LIFE

Without good, stable health, people struggle to provide adequate income and pursue education for reaching their potential.



## A STRONG FOUNDATION

Living in a financially stable household is a major determining factor in the education and future success of children.

# OUR UNITED WAY PARTNERSHIP

HELPERS IN OUR  
OWN COMMUNITY



## LIDA CASPER

### HELPS TO ENSURE KNOWLEDGE + SKILLS

*“We strongly believe that opportunities are the key to closing the achievement gap. Our families need access to basic human needs like food, housing and medical care in order to have the ability to engage in academic and enriching opportunities that promote college, career and civic readiness. Our partnership with the United Way of Olmsted County builds strong kids and families for a vibrant community and future.”*



## ALLISON JOHNSON

### HELPS FIGHT FOR A HEALTHY LIFE

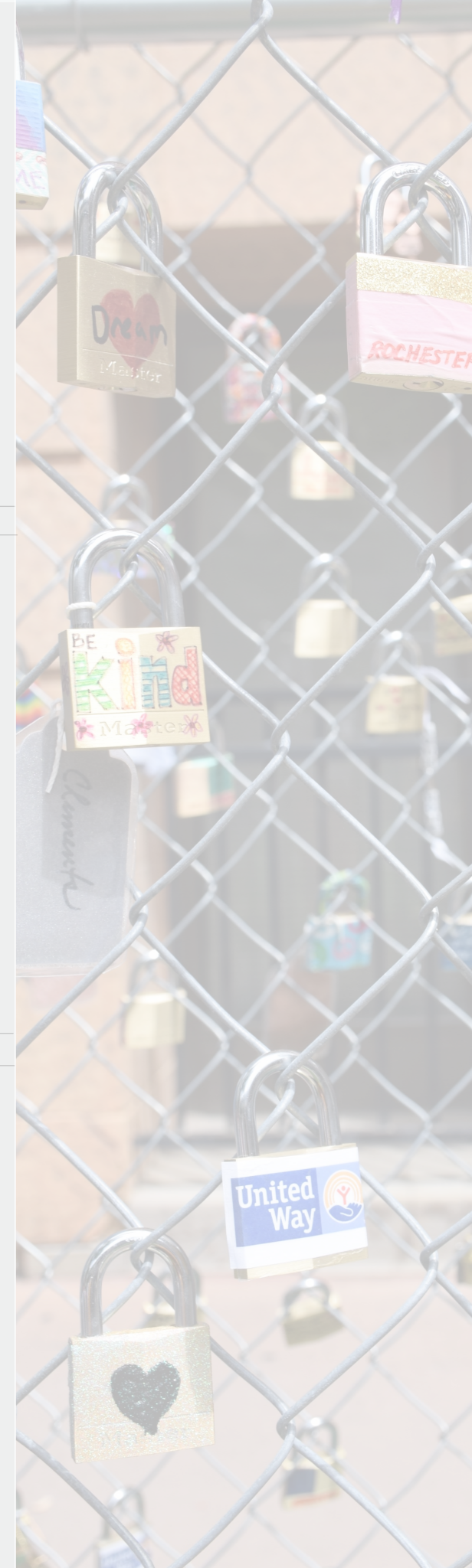
*“I truly believe it takes a village to raise a child and United Way is a vital part of that village for many families in our community. By giving to United Way, you are a piece of what it takes to raise a child. In my work with families utilizing Crisis Nursery services, I often times reassure families that none of us make it through this life without a little help from others from time to time. When I’m able to help a family whose personal safety net may be a little thin, I always feel a great sense of honor to get to be a part of their story.”*



## KAREN LAFEE

### HELPS TO BUILD A STRONG FOUNDATION

*“Through United Way’s generous support Family Promise Rochester has the opportunity to build our capacity in supporting families to move out of poverty through financial education, life skills, and long term sustainability. United Way’s partnership provides valuable support to increasing our visibility in the community and development of strong partnerships in both the for profit and nonprofit community”*





## KNOWLEDGE + SKILLS



# COMMUNITY SCHOOLS

**EDUCATION UNLOCKS POTENTIAL.** IN OLMSTED COUNTY, **84%** OF ALL STUDENTS GRADUATE ON TIME, BUT THE RATE DROPS TO **70%** FOR STUDENTS ON FREE OR REDUCED LUNCH PROGRAMS. RESEARCH INDICATES THAT STUDENTS SUCCEEDING IN SCHOOL GO ON TO HAVE MORE SUCCESSFUL OUTCOMES AS HIGH SCHOOL GRADUATES. DROPOUTS ARE **72%** MORE LIKELY TO BE UNEMPLOYED.

**UNITED, WE'RE SUPPORTING QUALITY EARLY CHILDHOOD EDUCATION, AFTER-SCHOOL PROGRAMS, READING TUTORS, MENTORS, YOUTH DEVELOPMENT PROGRAMS, BOOKS FOR CHILDREN, SCHOOL SUPPLIES, AND MORE TO ENSURE FUTURE GENERATIONS ARE ON A PATH TOWARD SUCCESS.**





**LIDA CASPER**

RIVERSIDE ELEMENTARY

*“Our partnership builds strong kids and families for a vibrant community and future.”*

# A SNAPSHOT OF OUR WORK IN EDUCATION



**474**

Youth in Olmsted County are now building healthy relationship skills with help from youth after-school & summer programming, and activities within programs like Girl Scouts ConnectZ.

**961**

Children in need are now achieving age-appropriate developmental milestones to help them become kindergarten ready through programs like Success by Six and the Gage East Apartments.

**487**

People in need are now completing financial literacy programs with help from partners like Catholic Charities and Three Rivers Community Action, and through programs like Family Stabilizer and Refugee Resettlement.



## A HEALTHY LIFE



10

**GOOD PHYSICAL, MENTAL, AND DENTAL HEALTH INCREASES**

**QUALITY OF LIFE. 26%** OF OLMSTED COUNTY RESIDENTS ARE

CONSIDERED OBESE, AND PEOPLE WITH LOWER EDUCATION AND

INCOME HAVE HIGHER RATES OF ORAL/DENTAL DISEASE. THE

COMMUNITY NEEDS STRONGER MENTAL AND DENTAL HEALTH

SYSTEMS FOR THOSE MOST VULNERABLE, AS WELL AS

RESIDENTS THAT ARE UNDER-INSURED.

**UNITED, WE'RE PROVIDING HEALTH AND DENTAL CARE TO**

**PEOPLE WHO NEED IT MOST, PREVENTIVE DENTAL CARE**

**EDUCATION, MENTAL HEALTH EDUCATION, AND MORE TO**

**ENSURE THE MOST VULNERABLE IN OUR COMMUNITY ARE**

**ABLE TO IMPROVE THEIR HEALTH.**



**ALLISON JOHNSON**  
CRISIS NURSERY

*“It’s through the support of United Way that Crisis Nursery is able to be a piece of the safety net for families in Olmsted County and I do believe our community is a better place because of this partnership.”*

# A SNAPSHOT OF OUR WORK IN HEALTH



**551**

People in need that received early interventions for mental illness in community settings (behavioral and mental health care) with help from programs like Community Health Worker, Senior Independence and Families Matter.

**1,496**

Children and youth in need received preventive dental care including individualized case management, teeth cleaning and x-rays from partners like Children’s Dental Health Services.

**1,524**

Services delivered to people in need of acute and chronic care or continuity of care from important programs like the Health Clinic.



## A STRONG FOUNDATION



INCOME +  
BASIC NEEDS

**LIVING IN A FINANCIALLY STABLE HOUSEHOLD IS A MAJOR DETERMINING FACTOR IN THE EDUCATION AND FUTURE SUCCESS OF CHILDREN.** UNITED WAY HELPS MEET THE BASIC NEEDS OF FOOD, SHELTER, AND SAFETY IN OLMSTED COUNTY. BOLDLY, WE'RE HELPING SENIORS REMAIN INDEPENDENT, PROVIDING CRISIS CHILDCARE, LEGAL SUPPORT, SAFE CHILD VISITATION, RENT ASSISTANCE, TRANSITIONAL HOUSING, FOOD, WINTER OUTERWEAR, AND MORE TO ENSURE BASIC NEEDS ARE BEING MET.

**UNITED, WE'RE PROVIDING JOB TRAINING, FINANCIAL LITERACY COURSES, JOB COACHING, TAX FILING ASSISTANCE, AND MORE TO HELP PEOPLE IN OUR COMMUNITY BECOME MORE FINANCIALLY STABLE.**



**KAREN LAFÉE**  
FAMILY PROMISE

*“United Way’s partnership provides valuable support to increasing our visibility in the community and development of strong partnerships in both the for profit and nonprofit community.”*

# A SNAPSHOT OF OUR WORK IN **INCOME + BASIC NEEDS**



**2,822,427**

Nutritious meals delivered to people in need by programs like Meals on Wheels, meals served community-style by programs like Noon Meal and food distributed through food shelves like Channel One.

**291**

People in need receiving immediate, short-term shelter with help from partners like Salvation Army and Lutheran Social Services and through their programs LINK and Rent Assistance.

**314**

People in need gaining improved employment with help from partners like Ability Building Center, PossAbilities and Hawthorne, and through programs like Family Stabilizer and Transitional Living Case Aid & Rapid Rehousing.

# OUR UNITED WAY STORY



*"I choose to Live United, because I continue to envision a world where each and every one of us commits to giving "a hand up" to someone else. That is powerful, it's impactful, and I believe it could change the world for the better."*  
 -Lisett Comai-LeGrand



## LISETT COMAI-LEGRAND

DIRECTOR OF MARKETING & PRODUCT MANAGEMENT - FIRST ALLIANCE BANK

*I have always believed in my heart of hearts, that each one of us, regardless of our financial status, have the opportunity to give a "hand up" to others. I don't think anyone could ever say that they got to where they are in their life without help from someone else. I know that this rings true for me.*

*A hand up could be a financial contribution, volunteering, coaching, advice or just by being there for someone in their time of need. That's what Living United means. Contributing. Caring. Making a Difference.*



## MARK OSTREM

OLMSTED COUNTY ATTORNEY

*"I am fortunate to work in a position that provides a real time "unfiltered" perspective on the community. I have been blessed to work closely with the United Way of Olmsted County and many of the partner agencies."*



## BECKY HINCHLEY

OPERATIONS MANAGER - MAYO DEPARTMENT OF ONCOLOGY

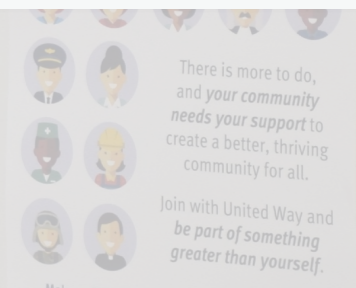
*"Each year I make an essential choice to be a Women United member. Women United is my way of helping children and youth reach their potential."*



## MIKE VANCE

ADVISORY SOFTWARE ENGINEER - IBM

*"Living United means helping all live a life free from need and despair. We unite by giving and volunteering to uplift all who need a hand. United Way helps communities organize efforts to bolster education, health, income, and to meet basic needs."*





# 2016-2017 PROGRAM + PARTNERS

## WE WIN BY LIVING UNITED.

By forging unlikely partnerships. By finding new solutions to old problems. By mobilizing the best resources. And by inspiring individuals to join the fight against their community's most daunting social crises.

Together, we involve experts and leaders, practitioners and people from all walks of life into the solution conversation. In every community, we're the stop-talking-start-doing-band-together-and-take-on-impossible-task-masters. No matter the odds, we surround a problem, and we fight to win—with results to show for it.

United Way engages a strategic and diverse network of community supports to help address the complex causes of poverty by creating long-lasting change in the interconnected areas of knowledge and skills, a healthy life and a strong foundation. These partnerships and the rest of United Way's work help change community conditions that challenge all lives, bring people together to create lasting solutions, and improve lives today for better communities tomorrow.



## KNOWLEDGE + SKILLS

- Gage East Apartments:** Center City Housing Corporation
- Girl Scout Connectz:** Girl Scouts of MN WI River Valleys
- Lead Mentorship:** Olmsted County PACE
- Rochester Reading Champions:** Rochester Public Library
- Sports Mentorship Academy:** Sports U
- Success by Six:** Byron Community Education, Civic League Day Nursery, Families First of Minnesota-Head Start, Good News Children's Center, Tri-Valley Opportunity Council
- Teen Ascent:** Boys & Girls Club of Rochester, Quarry Hill Nature Center
- Youth Development:** Boys & Girls Club of Rochester
- Y-Mentors:** Rochester Area Family YMCA

## A HEALTHY LIFE

- Community Health Worker:** International Mutual Assistance Association
- Families Matter:** Family Service Rochester, NAMI Southeast Minnesota
- Good Samaritan Health Clinic:** The Salvation Army
- Happy Teeth:** Children's Dental Health Services
- Silver Creek Corner:** Center City Housing

## A STRONG FOUNDATION - IN INCOME

- Achieve Homeownership:** Three Rivers Community Action
- Family Stabilizer:** Family Promise Rochester
- Financial Literacy:** Catholic Charities
- Pathways to College and Career:** Hawthorne Education Center
- Refugee Resettlement:** Catholic Charities
- Transitional Living Case Aid and Rapid Rehousing:** The Salvation Army

## A STRONG FOUNDATION - BASIC NEEDS

- Crisis Nursery:** Families First of Minnesota
- Family Access Center:** Family Service Rochester
- Food Shelf:** Channel One Regional Food Bank
- Living Independently with Knowledge (LINK):** Lutheran Social Service of Minnesota
- Legal Assistance:** Legal Assistance of Olmsted County
- Meals on Wheels:** Family Service Rochester
- Noon Meal:** The Salvation Army
- Rent Assistance:** The Salvation Army
- Senior Independence Collaborative:** Elder Network, Family Service Rochester, The Salvation Army
- Supported Employment:** Ability Building Center, PossAbilities

# OUR UNITED WAY FINANCIALS

## GROWING & CHANGING IN OUR OWN COMMUNITY

Revenue, expenses, assets, and liabilities for the year April 1, 2016 - March 31, 2017.  
Visit [www.uwolmsted.org/accountability](http://www.uwolmsted.org/accountability) to view the organizations full audit report.

*United Way of Olmsted County unites people and resources to improve lives in the community with a focus on knowledge and skills, a healthy life and a strong foundation - the building blocks for a good quality life.*

Public Support	\$3,750,798
Donor Selected Designations	-\$706,341
Estimated Uncollectible	-\$152,038
Uncollected Pledge Adjustments	\$15,651
Programs & Grants	\$97,333
Building Rental	\$5,242
Administrative Fees	\$5,415
Investment Income	\$150,245

**TOTAL REVENUE \$3,166,305**

REVENUE

Grants & Program Services (Community Fund)	\$2,427,723
Donor Selected Designations	-\$706,341
Initiatives	\$477,530
Community Impact	\$359,994
Development & Fundraising	\$367,534
Management & General	\$274,124
United Way Worldwide Dues	\$42,597

**TOTAL EXPENSES \$3,243,161**

EXPENSE

**CHANGE IN NET ASSETS -\$76,856**

CHANGE IN NET ASSET



# ASSETS

Current Assets	\$4,731,018
Property & Equipment	\$607,003

**TOTAL ASSETS \$5,338,021**

# LIABILITIES

Current Liabilities	\$1,241,804
Long-term Liabilities	\$11,822

**TOTAL LIABILITY \$1,253,626**

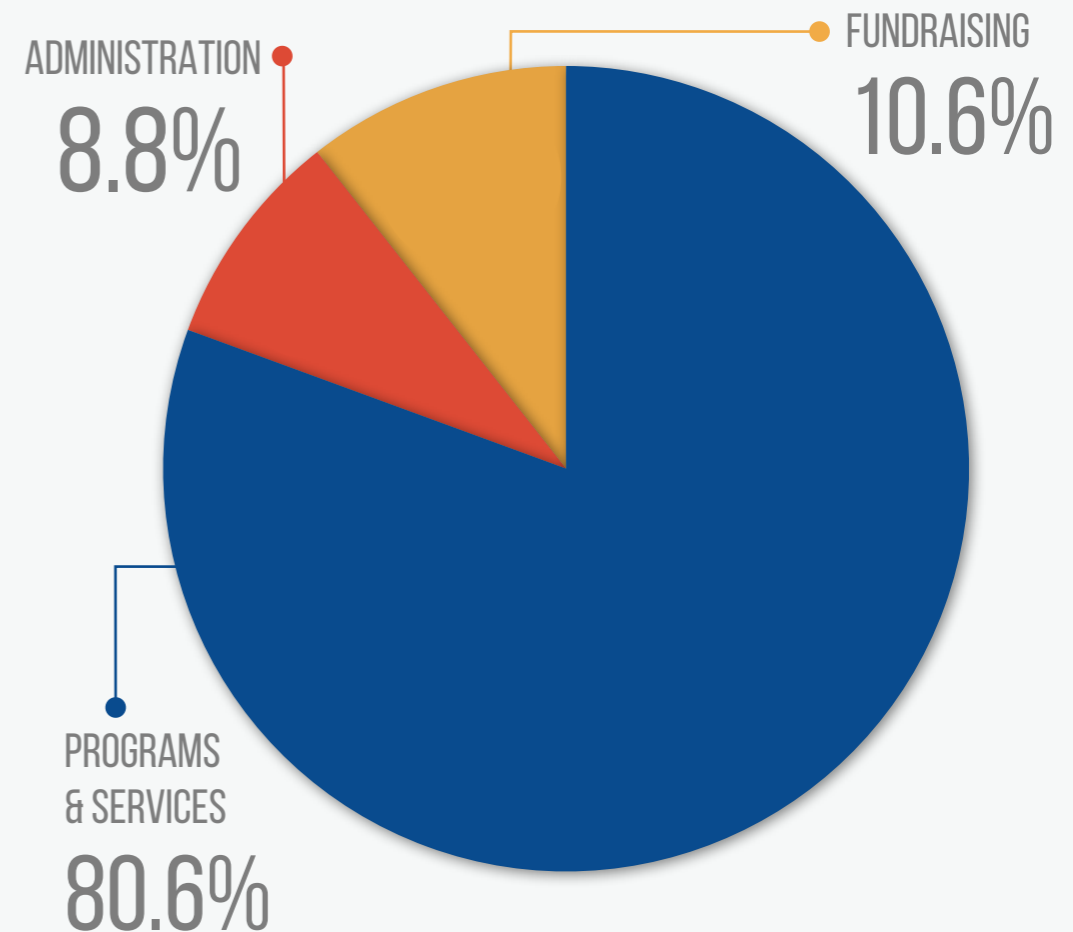
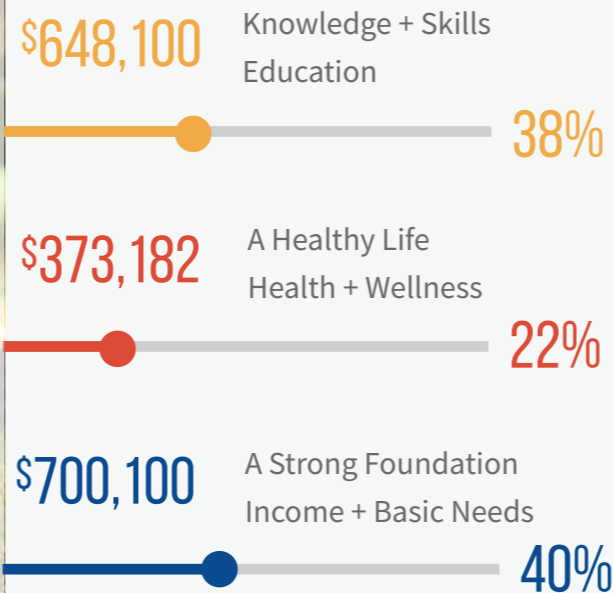
# NET ASSETS

Unrestricted Net Assets	
-Undesignated General	\$280,431
-Property Investment, net of related debt	\$561,405
-Board Designations	\$522,449
Temporarily Restricted	\$2,720,110

**TOTAL NET ASSETS \$4,084,395**

# NET ASSETS + LIABILITIES

**TOTAL NET ASSETS + LIABILITIES \$5,338,021**





United Way of Olmsted County's Board of Directors and Staff are foremost a guardian of values on behalf of its stakeholders. The Board of Directors provide strategic leadership and vision through which the creation and implementation of such strategic plans and policies are developed by staff.



## BOARD OF DIRECTORS

**Jerome Ferson**  
President UWOC

**Walt Ling**  
Board Chair

**Troy Johnson**  
Vice Chair

**Jeffery Hazard**  
Treasurer

**Chris Nelson**  
Board Past Chair, Campaign Chair

**Shamila Amaarasekera**

**Patricia Barrier**

**Michael Brennan**

**John Edmonds**

**Jeff Elstad**

**Paul Fleissner**

**Virginia Merritt**

**Michael Munoz**

**Omar Nur**

**David Oeth**

**Jamie Rothe**

**Kim Sin**

**Don Supalla**

**Emily Ties**

**Diane Wottreng**

## STAFF

**Jerome Ferson**  
President UWOC

**Chad Campbell**  
Vice President of Community Impact

**Jennifer Teske, CFRE**  
Vice President of Resource Development

**Chelsey Mingone**  
Director of Communications and Events

**Justin Stoll**  
Community School Partnership Specialist

**Kelsey Zubke**  
Impact Analyst

**Emily Johnston**  
Outreach Program Manager

**Kris Brewer**  
Resource Development Operations Specialist

**Lindsey Nelson**  
Campaign Specialist

**Bonnie Schultz, CFRE**  
Major Gifts and Planned Giving Director

**Dale O'Groske**  
Chief Financial Officer

**Lan Duncanson**  
Finance Assistant

**Pam Wright**  
Executive Assistant

**GIVING WITH  
CONFIDENCE**

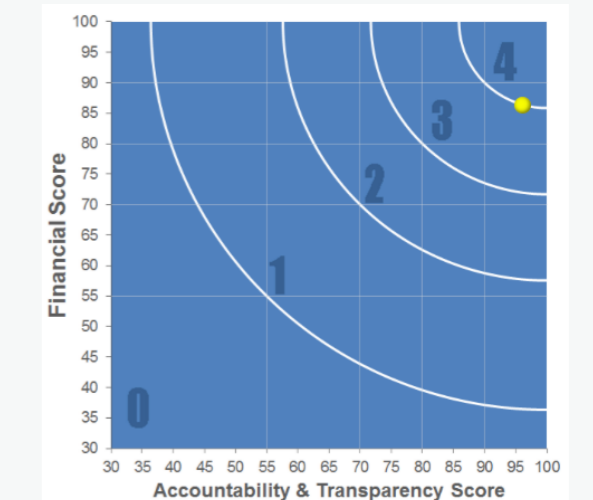


With a commitment to transparency, accountability and results, United Way of Olmsted County enables you to make a difference right where you live and see the difference you are making.

**CHARITIES REVIEW COUNCIL:  
MEETS STANDARDS SEAL**



United Way of Olmsted County meets all 27 Accountability Standards of the Charities Review Council. National guidelines allow for up to 30 percent of donations to be spent on administrative costs. We spend approximately 19 percent.





*Women United, formerly the Women's Leadership Council, unifies the collective caring power of women who are Leaders in Giving.*

*Women United is an affinity group of United Way. United Way of Olmsted County's Women United promotes support of signature issues impacting early childhood literacy and helping children & youth succeed in school.*

Susan Ahlquist  
 Amy Alexander  
 Brandee Anderson  
 Lucy Bahn  
 Irina Bancos  
 Janet Befort  
 Catherine Benson  
 Brenda Berg  
 Audrey Betcher  
 Lori Blauwet  
 Tisha BolgerBeth Borg  
 Sheri Brandvold  
 Kris Brewer  
 Melissa Brinkman  
 Carla Brunsvold  
 Heidi Campbell  
 Elaine Case  
 Kelly Classic  
 Amy Clayton  
 Lisa Colborn  
 Erin Collins  
 Lisett Comai-Legrand  
 Cheryl Coryea  
 Debra Cox  
 Angela Cramer  
 Michelle Daiss  
 Betty Devine  
 Debra Donahue  
 Kathryn Doty  
 Sue Dripps  
 Holly Duck  
 Kika Dudiak  
 Yvette Dulohery  
 Amy Eich

Beth Elliott  
 Janice Engberg  
 Judy Felten  
 Sara Felts  
 Cathryn Fraser  
 Sharon Gabrielson  
 Bridget Gabrielson  
 Lydia Gammell  
 Yolanda Garces  
 Wendy Gay  
 Sue Greenberg  
 Cheryl Hadaway  
 Wanda Hagquist  
 Valerie Halling  
 Kimberly Hallum  
 Kathleen Harrington  
 Sharonne Hayes  
 Julie Hebert  
 Patricia Herman  
 Linda Hillenbrand  
 Rebecca Hinchley  
 Amy Hoerle  
 Mary Kristo  
 Ronaele Hoffman  
 Michele Hoover  
 Shirley Hultz  
 Betty Hutchins  
 Kari Jadin  
 Julia Johnson  
 Mary Jane Jones  
 Marlea Judd  
 Carmen Kane  
 Mary Kasten  
 Lori Keith

Denise Kelly  
 Kyle Klarich  
 Alison Knight  
 Sandra Kopp  
 Barbara Kriesel  
 Rosemary Kuzma  
 Debra Lafferty  
 Sharon Lager  
 Colleen Landherr Maddox  
 Germaine Langer-Neumann  
 Martha Laskar-Aleman  
 Lori Lonergan Brennan  
 Susan Luebbe  
 Amy Mahon  
 Toni Mangskau  
 Linda Mansfield  
 Patricia McCleese  
 Kimberly McGarry  
 Laura Meiners  
 Kathleen Meyerle  
 Amanda Mikhail  
 Dawn Milliner  
 Robin Molella  
 Sally Morse  
 Kelly Murphy  
 Jean Murray  
 Audrey Nelson  
 Julie Neumann  
 Beth Nienow  
 Keri Norman  
 Marcia O'Brien  
 Helen O'Connor  
 Gwen Oeth  
 Shelly O'Groske

Alexandra O'Horo  
 Mary Owen  
 Michelle Oyen  
 Melissa Payne  
 Sharon Peterson  
 Julie Postier  
 Rachel Pringnitz  
 Anne Pronschinske  
 Carmen Radecki Breitkopf  
 Sue Reinke Walch  
 Jennifer Ridgeway  
 Marilyn Riley  
 Angela Roche  
 Gayle Rock  
 Jill Rock  
 Veronique Roger  
 Joan Rose  
 Joanne Marie Rosener  
 Teresa Rummans  
 Laura Sandwick  
 Teri Sanneman  
 Paula Santrach  
 Gail Sauter  
 Susan Scanlon  
 Krista Schubert  
 Bonita Schultz  
 Nina Schwenk  
 Wendy Shannon  
 Jacqueline Sheeran  
 Linda Shepherd  
 Julie Shirley  
 Diane Simpson  
 Carolyn Sogla  
 Susan Spafford

Melissa Sperber  
 Elizabeth Stewart  
 Cynthia Sweeney  
 Laura Swenson  
 Tanja Taff Morello  
 Sandra Taler  
 Carla Tentis  
 Jennifer Teske  
 Farris Timimi  
 Morgan Towell  
 Julie Trumble  
 Sue Underdahl  
 Jan Vetter  
 Danielle Vlazny  
 Rosalie Vondrashek  
 Mary Vorndran  
 Brenda Walsh  
 Jennifer Walter  
 Margaret Weglinski  
 Lilli Weivoda  
 Deborah West  
 Jennifer Jane Westendorf  
 Julie Williams  
 Megan Williams  
 Jaymi Wilson  
 Sandra Woolley  
 Diane Wottreng  
 Karen Ytterberg  
 Dee Dee Zwettler

# WOMEN UNITED

THE CARING POWER OF WOMEN



# LEADERS IN GIVING

# 20



## ALEXIS DE TOCQUEVILLE

Mike & Mary Harper  
Vanda A Lennon\*  
Mary Ellen & Mark Warner\*  
2 Anonymous

## DIAMOND

Jeremy Fogelson & Megan Fogelson-Dahlby  
Jennifer St Sauver & Mark Keegan  
Dr Ebbie Stewart & H Paul Zellweger

## EMERALD

Jesse & Kelly Arroyo  
Arthur Beyder  
Keith Bible & Mary J Kasten\*  
Jeffrey & Elizabeth Bolton\*  
Daniel & Carmen Breitkopf  
Melissa Brinkman\*  
Jed Dart  
Richard Ehman & Margaret Houston\*  
Beth Elliott & Steven Rose\*  
David & Carol Foley\*  
Morie & Marcia Gertz\*  
Rich & Sue Greenberg\*  
Andrea Jacobsen\*  
Mark & Kris Litzow\*  
Ron Menaker & Linda Mansfield\*  
Robert & Rebecca Nesse\*

David & Gwen Oeth\*  
Jon Olson  
Deanna Pafundi  
Henry Pitot & Kika Dudiak\*  
Andrew Slain  
David & Sara Stenhaug\*  
David & Julie Warner\*  
1 Anonymous

## PLATINUM

David & Susan Ahlquist\*  
Elizabeth J Atkinson  
Uldis & Lorena Bite\*  
Lori A Blauwet  
Kerrie & Bob Bonacci  
Jeffery & Marie Brown\*  
Michael & Sally Burns\*  
Bill & Victoria Cliby  
Jerome Ferson\*  
Donald & Sharon Gabrielson\*  
Peter & Brenda Galindez\*  
Dennis & Ann Gastineau\*  
Peter & Wendy Gay\*  
Russell & Melinda Gelfman  
Roland E & Marilyn G Graves\*  
Thomas & Beverly Hagen\*  
Donald R Halley\*  
James & Elizabeth Hannon  
Thomas & Mary Hartman\*  
Mark & Michele Heminger\*  
Paul & Barb Henke\*  
Troy & Jane Herman  
Julie & Harry Hoffman\*

April Horne & Gary Komaniecki\*  
James & Kathryn Hoyer\*  
Karen Hurtis\*  
Randolph Johnson\*  
William & Barbara Jordan  
David & Carole Joyce\*  
Drs Barry & Beth Karon\*  
Tom & Denise Kelly\*  
Alison & Seth Knight  
Philip & Amanda Kuper  
Stephen & Cynthia Lehmkuhle\*  
Matt & Laurel Light\*  
Bob & Kathy Lohr\*  
Julie & William Lower  
Paul & Lynn Mackin\*  
Kerry Miller  
Mitchel R. Mindrum  
Dave & Cheryl Moertel\*  
Mitch & Michelle Oyen  
Larry & Gail Pease  
Debbie Rielley  
Michael & Dorine Ross\*  
Teri Rummans  
William & Anna Sanchez  
Paula Santrach\*  
Tom & Kathy Scheid  
JoAnn Scherger\*  
Craig Smoldt\*  
Rob & Cathy Stroebel\*  
Lisa Kirkland & Warren Thompson\*  
Danielle Vlazny  
Rosalie Vondrashek\*  
Phil & Sue Wheeler\*  
John & Irene Wiltsie  
3 Anonymous

\* Recognizes United Way Loyal Contributors, giving to United Way for 10 years or more.



## LISETT COMAI-LEGRAND

DIRECTOR OF MARKETING & PRODUCT  
MANAGEMENT - FIRST ALLIANCE BANK

*"I don't think anyone could ever say that they got to where they are in their life without help from someone else. I know that this rings true for me."*



## GOLD

Antolak Family  
 John Atkinson  
 Marie-Christine Aubry MD  
 David & Maureen Bahr\*  
 Mark E Baker\*  
 Jon Bedsted\*  
 Jeff & Emily Bond\*  
 Jason & Kelly Boynton\*  
 Mark Branstad  
 Mayor Ardell & Judy Brede\*  
 Toni & Jeff Burns\*  
 Dennis Busche & Jane Brandhagen\*  
 Vincent & Karen Canzanello\*  
 Kurt & Jane Carlson\*  
 Paul & Bridget Carns  
 Paul & Margaret Carpenter\*  
 Elaine Case & Bill Wiktor\*  
 Joe & Amy Cass  
 Kelly Classic\*  
 Jack Cusma & Dee Dee Zwettler\*  
 Gaurang Daftary  
 Paul & Jane Dahlen\*  
 Richard Devlin & Cheryl Coryea\*  
 Sharon & Wayne Dunemann\*  
 John & Karen Edmonds  
 Larry Karnitz & Sara Felts  
 The Harper Family Foundation  
 Jeff Gintz  
 Kevin Glaser  
 Gregory & Amy Gores  
 Stephen & Mary Gudgell\*  
 Michael Hancock

Sharonne & David Hayes\*  
 Lee & Dottie Hecht\*  
 Pamela Helgemoe  
 Marita Heller & Rick Orvold\*  
 Marcus Hendrickson\*  
 Vincent & Michele Hoover\*  
 Bruce Horazdovsky  
 Lori Hosek  
 Daniel & Georgia Hurley  
 Linda & Frank Lossi\*  
 Adam & Kelly Jacob  
 Dr & Mrs James W Jakub  
 Jan & Dave Jaspersen\*  
 Sanjay & Manju Kalra  
 Jeff Ketcham  
 Karl & Susan Krecke  
 Lou & Jeanne Kuhlmann\*  
 David Langevin\*  
 Edward & Linda Laskowski  
 William McCubbin\*  
 Justin & Virginia Merritt  
 Michael & Amanda Mikhail  
 Dawn Milliner\*  
 John & Susan Modry\*  
 John C & V Arlene Morris\*  
 Steven Munroe  
 Bob & Lynn Nelson\*  
 Dr Audrey M Nelson\*  
 Randall Newman\*  
 Charlotte Nordrum\*  
 Jennifer Nosbisch  
 John & Pat Noseworthy\*  
 James & Marcia O'Brien\*  
 Michael & Judith O'Fallon\*

Brian & Gayle O'Neill  
 Darin Passer  
 Michael Pederson  
 Bret & Karen Petersen\*  
 Bradley & Amanda Phelps  
 Mark & Ivy Pillers\*  
 Jarrett & Linda Richardson\*  
 Stephen J & Marilyn T Riederer\*  
 Brent Roller  
 Stephen & Janey Russell  
 Charlotte H Rydberg  
 Jay H Ryu & Patricia A Pellikka\*  
 Al & Julie Schafer\*  
 John & Susan Schaffner\*  
 Kenley & Susan Schmidt\*  
 Mike & Sandy Silber\*  
 David & Donna Sippel\*  
 Harvest Bible Chapel  
 Timucin Taner  
 Jeffrey & Pamela Thompson\*  
 Lorraine Uthke & David Distel\*  
 Bill Volkmar & Sheri Brandvold\*  
 John & Barbara Volz  
 James Walch & Sue Reinke Walch\*  
 Dean & Teresa Waldof\*  
 Randall & Patricia Walker  
 Dennis & Lilli Weivoda\*  
 Tom & Ellen Wentz\*  
 Pat Whisnant\*  
 Megan & Jeremy Williams\*  
 Drs Constance Williams & J  
 Michael Bostwick\*  
 3 Anonymous  
 3 No Recognition Name

# LEADERS IN GIVING

## SILVER

William & Caroline Adamson\*  
David Agerter  
Robert & Elizabeth Ahern\*  
Allen Aksamit Jr MD  
Cheryll Albold  
Julie & Patrick Aldrich  
Glenn & Christine Alexander  
Timothy & Rodica Alexander  
Barm & Karen Alsbrook  
Chad & Brandee Anderson\*  
Francesca Anderson  
Paul & Susan Anderson\*  
Ann & Clark Anderson\*  
Marjorie & Scott Anfinson  
Aneel Ashrani & Deepika Bhargava\*  
Jonathan Atkinson  
Dr Raymond & Judy Auger\*  
Wesley Austin  
Cindy Bahler\*  
Mark & Lucy Bahn  
Darin & Lauren Baker  
Alan & Amy Baltzer  
Anne & Mark Baron\*

John Beck\*  
Scott & Andrea Beck\*  
Debbie Bennes  
Keith & Johanna Berge  
Dan & Sandy Berndt\*  
Matt Bernstein & Rhoda Lichy\*  
Audrey Betcher\*  
Dr Allen & Gail Bishop\*  
Kate Lynch Bix & Jerry Bix  
Robert Bleimeyer  
Karl Blomquist, MD  
Linda Bly  
Jennifer M Boland  
Tisha Bolger\*  
Jennifer & Colin Boysen\*  
Richard Bram  
Steven Branda  
Michael Branson\*  
Dr Laura Breeher  
Robert Bromley  
Douglas & Tina Brown  
Robert D & Julie K Brown\*  
David & Melissa Brudwick\*  
Carla Brunsvold\*  
Charles & Pamela Brust\*  
Drs Brian & Kari Bunkers  
James Burke  
Ron & Sarah Buzard\*  
Terry & Kathleen Buzzell\*  
George & Darlene Caflisch  
Chad Campbell  
J Keith Campbell MD\*  
Nathan Campbell  
Kim Carpenter-Hakes  
Roberto Cattaneo & Iris Kemler Cattaneo  
Keith J Christensen  
Grant & Mary Christiansen\*

Mark Christopherson MD\*  
Michael & Meredith Clark  
Rita & James Clark\*  
Amy Clayton  
Elizabeth Clayton  
Dr & Mrs Charles Coddington III  
Clifton & Lisa Colborn\*  
Christopher & Suzanne Colby\*  
Neil Columbus  
Steven & Laurie Cook\*  
Paula Craigo & John Lieske  
Don & Peggy Dalland\*  
Gene & Sandy Dankbar  
Tom Davies\*  
Donald & Barbara DeCramer\*  
Amy Degnim  
Leslie Demmer  
Eugene & Joanne DiMagno\*  
Robert & Ilse Diasio  
David Dines  
Mary Dobbins  
Ann Marie & David Dose\*  
Robert Douty  
John & Faye Doyle\*  
Holly Duck  
Yvette M Duloherly\*  
Livius & Margaret d'Uscio  
Jeffrey Ehrhart & Marion Pitts\*  
Phillip & Susan Einspahr\*  
Sally Enders  
Janice M Engberg PhD\*  
Tony & Terri Enquist\*  
Dr Raul & Joan Espinosa  
Lynn Estes  
Dr Titus Evans Jr\*  
Lori Ewoldt  
Susan & Edward Prosser\*

Mark Federspiel & Linda Gregory  
Bob & Cynthia Fleming\*  
Lynn M Flickinger & Stephan R Hanna\*  
Robert Foote  
Janelle M Fox\*  
Jim & Wendy Francis  
Tom Freeman & Alan Skogerbo  
Sarah Gantert  
Hough Family  
Jonathan & Sheryl Good  
Paul & Terry Gorman\*  
John & Jacquelyn Gosse\*  
Jenna Granle  
Karen & Fred Graszer\*  
Casey Green  
Deb Groehler  
Aaron & Deborah Gross  
Bryan Groves  
Bruce & Doreen Gudlin\*  
Cheryl J & Marc A Hadaway\*  
Kimberly Hallum\*  
Barbara Haner  
Ron Hankey  
Chad & Sara Hanson  
Liz Hauger  
Jeffrey & Susan Hazard\*  
Joanne & R Arlen Heathman  
Scott & Pat Heck\*  
Corey & Lisa Heimer  
Paul & Heidi Heimgartner  
David A & Nancy M Heinz  
Tom & Lou Ann Hellmich  
John I Helmers, PE\*  
Char & Norm Hepper\*  
Patricia & Dale Herman\*  
Jerry Hermann  
Mark Hettinger\*



Chad & Shauna Hirsch\*  
Steve & Ellie Hodgson\*  
Amy Hoerle\*  
Kimberly Hogstad  
George & Sandra Hohberger\*  
John & Gloria Hostak  
Diane L Howard  
Deven Hui  
Shirley Hultz\*  
Betty A Hutchins\*  
John Huxsahl & Cindie Severson-Huxsahl\*  
Doug Inman  
David & Carrie Inwards\*  
James & Norma Isaacson\*  
Debby & Jim Jacobsen\*  
Tom & Kristie Jacobson\*  
Kari & Jason Jadin\*  
Med & Jackie James\*  
Jon Jensen  
Mircea Jerghiuta\*  
Jane Jirele Blaine & Tom Blaine  
Amy & Rick Johnson\*  
Kristin Johnson  
Leigh J & Judy Johnson\*  
Mindy Johnson  
Robert & Janet Johnson  
Dwight & Kathy Jones  
Karen Jongbloedt  
Lois Jorstad Trust  
Dr & Mrs Frank A Jost III\*  
John & Joan Joyce\*  
Marlea & Joe Judd\*  
Steven & Linda Jurrens\*  
Michael & Brenda Kalmbach  
Bill Karnes\*  
Brad Karon & Valeria Cristiani  
Zvonimir Katusic



Gary & Kathy Kerska\*  
Laura Kotten  
Kirby Kough  
Jason & Anna Krueger\*  
Mark & Dawn Krupski\*  
Jon & Jodi Kruse  
Kirsten & Al Kuehl\*  
Rosemary A Kuzma\*  
Robert & Charlene Kyle\*  
Trudi Lane  
Eric & Jane Lantz\*  
Julie & Jeffrey Larson Keller  
Marty Aleman\*  
Michael & Angela Launsbach  
Donald & Phyllis Layton\*  
Gregory & Donna Layton\*  
James Leary  
Raymond Legrand & Lisett Comai-Legrand\*  
David & Betsy Leonard\*  
Dave & Jan Lieder\*  
Chad & Lavonne Liedl  
Judy & Rick Lien\*  
Walt & Darcy Ling\*  
Scott & Jolene Litin\*  
Christine Lohse & Scott Przybelski  
Lori Lonergan Brennan  
Cheryl Lovlien  
Drs Bruce & Sue Lund\*  
Carl & Evangeline Lundstrom\*  
Diane Mack  
Timothy Mackey\*  
Colleen & Dan Maddox\*  
Leo & Katie Maguire  
Kathryn Mallwitz\*  
Jacob Malwitz & Chad Weaver  
Mary Marnach  
William & Margaret Marshall\*

Peg & Ross Mattke\*  
Pamela J McCabe\*  
Dr Cynthia McCollough  
Christopher J McDevitt, M.D.  
Charron McLeod  
Edward & Raeann McLeod  
Mike & Laura Meiners  
Kerry & Cresta Melcher\*  
K A Meyerle & J K Marttila\*  
Robert & Ruth Miles  
Barb & Ed Miller\*  
Gary & Joyce Miller\*  
Nate & Donna Miller  
Wayne & Cate Miller Family\*  
Jay & Dawn Mitchell  
Mark Mitchell  
Louise Moe\*  
Dean Morbeck  
Ancy & Bob Morse\*  
Ray & Sally Morse\*  
Margaret Moutvic  
David Mueller\*  
Sharon Mueller  
Lisa Muller  
Constance & Lonnie Mullins\*  
Kelly J Murphy\*  
David Murray  
Jean Murray & George Huston\*  
Brad Nelson  
Denise & Jarred Nesbitt  
Gary & Germaine Neumann\*  
Julie Neumann  
William & Sharon Nichols\*  
Jack & Cheryl Nimitz\*  
Bruce Nix  
Dale Nordquist\*  
Richard Nordstrom

Keri & Mark Norman\*  
Helen M O'Connor  
Karl & Theresa Oestreich\*  
Dale & Shelly O'Groske\*  
Kerry Olsen  
Lisa Drage & Eric Olson Family\*  
Diane O'Mara\*  
John & Karen Orbeck\*  
Christopher Orlowski  
Mary & Jeff Owen\*  
Lance & Karen Oyen  
Doug & Barbara Pappin\*  
Darrell & Elaine Pardi  
Dan & Terri Penz\*  
Robert & Teri Perez  
Sharon K Peterson\*  
Dr & Mrs Robert L Phyliky\*  
Jason Post\*  
Jerry E Pott & Maureen H O'Brien-Pott\*  
Chuck & Bonita Potter  
Rachel Pringnitz  
Anne Pronschinske  
Basem Ratrout  
Kimiyo Raymond  
Nicholas & Kate Remmes  
Kristine A Riess  
Marilyn Riley\*  
Suzanne Riley\*  
Alyson Roth  
Roger & Denise Ring\*  
Kevin & Lisa Roberts\*  
Angela Roche  
Jill Eggerichs  
Bruce & Nancy Rohde\*  
Dick & Joanne Rosener\*  
James D Ryan\*  
Eric & Linda Sanders

Teri Sanneman\*  
Forrest & Faye Sargent\*  
Gail M Sauter\*  
Steven E & Tami R Sawyer  
Kristin Scherber  
Aaron Schmitz  
Jay Schneider  
Christopher & Diane Schoenherr  
Krista Schubert\*  
Bonita & Russell Schultz\*  
Lori & Ed Schultz\*  
Gary & Rebecca Schwartz\*  
James Severin\*  
Kirk Severson  
James & Judy Seward\*  
Larry & Dr Wendy Shannon\*  
Patrick & Karen Sheedy\*  
Linda Shepherd\*  
Phil & Carolyn Sheridan\*  
Lynne Shuster\*  
Kurt & Joan Simon  
Stephanie Slack  
Judy & Jim Sloan Foundation  
In loving memory of Felix Overton  
Jay Smith  
Mark & Deb Smith\*  
Shane Smith  
Thomas & Jeanne Smith\*  
Karenjoy Spaeth  
Carol & Steve Sparrow  
Melissa & Ray Sperber\*  
Nathan Staff  
Lynn Stenstrom  
Randy & Nancy Stevens  
L L Stewart  
David & Kathy Stien  
Emanuel & Marie-Antoinette Strehler



Peter & Karen Streit\*  
Don & Stephanie Supalla\*  
Kevin & Julie Sutter\*  
Kenneth Swanson  
Harry & Delores Swedlund\*  
Cynthia Sweeney  
Keith & Laura Swenson\*  
Glenn & Pat Tabor  
Sandra Taler & Andrew Westreich\*  
Jay & Sarah Talwalkar  
Angelina Tan  
Christina Tatting\*  
Stephen Thibodeau  
Charles C & Marguerite H Tice Family  
Mark & Genise Troutman\*  
Julie Trumble  
Timothy & Kathryn Tucker\*  
Alan & Sharon Tuntland\*  
Udenberg Family-Katie & Joe Stein  
Susan & Steven Van Oort  
Mike & Katie Vance  
Pete Vedell  
Richard & Janice Vetter\*  
Kristin Volbrecht  
Jesse Volner  
Carl & Phyllis Von Wald  
Jim & Lee Wacholz\*  
The Wald Family  
Dr. Stephen C. Waldhoff  
Jennifer Walter  
Michael Walters  
Marge Ward  
Jerry & Sherrie Watson\*  
Denise Wedel  
Margaret Weglinski\*  
Richard & Lily Weinshilbourn\*  
Joe & Dar Weis\*

James & Ruth Weispfenning\*  
Gordon & Carla Weller\*  
Mary Wellik\*  
Tony & Carol Wells\*  
Randy & Linda Wendt\*  
Dana & Sue Whaley  
Julie Anne Williams\*  
Jaymi Wilson\*  
Ben Wiltsie  
Anna Windish  
Bruce Winter  
John & Gretchen Winter\*  
Bob & Debbie Witte  
Ron & Judy Yaggy\*  
Timothy Yoder  
Karen & Steven Ytterberg\*  
Michael & Barbara Zinser\*  
31 Anonymous  
13 No Recognition Name

## BRONZE

Renee Andersen\*  
Alan & Nadine Anderson\*  
Mark & Marie Anderson  
Nicole & David Anderson  
Thomas & Kimberly Aronhalt  
Lisa A Beck  
Robert Bondy  
Christine Boos  
Kris Brewer\*  
Dwight Brown  
Gena & Pat Cahill\*  
Michael Camilleri  
Janet Carlson  
Patricia Carlson  
Greg & Amy Caucutt\*  
Ed & Jenny Chestolowski







Nikolay Coates  
Brian, Kathy, Olivia & Anna Cook\*  
Tricia Dahl  
Tim & Karen Daly  
AJ Daniels\*  
Virginia Darling  
Dr & Mrs David Daugherty  
Marnie Meylor  
Sharon Deml\*  
Art & Nancy Disque\*  
Debra Donahue  
Sherilyn Driscoll  
Amy & Terry Eich  
Steven & Darcy Erickson  
Karen Evans  
Sandra Feehan & Donald Huseby\*  
Judy Felten\*  
Patrick & Karen Finneman Killinger  
Pam & Al Fisher  
Nina Garces & Joe Gliniecki  
Les & Dee Gill  
James E Glaser\*  
Jerianne Gonser  
Richard Hacker\*  
Wanda Hagquist\*  
Robert Hedman\*  
Shannon Heldt  
Linda & Doug Hillenbrand\*  
Gregory Hird\*  
Steven Hoerle\*  
Dan & Ronaele Hoffman\*  
Peter Hogan  
Teresa G Hyle  
Verlyn Johnson  
Bill Kalmes\*  
Carmen & Tom Kane\*

Timothy Kanne  
Kejal Kantarci  
Mark & Kyle Klarich\*  
Randy Klement  
Roger & Sharyn Krsnak\*  
Steven E Kvenvold\*  
Deb Lafferty\*  
Sharon Lager\*  
Arie & Suzanne Lagerwaard\*  
Tricia Lanzel  
Bethany Larson  
Bob & Barb Larson\*  
Drs Brad & Jean Lewis\*  
Tina Liebling & Mark Liebow\*  
John Lindsey\*  
Erin M Logan  
Megan & Mike Malugani  
Toni Kay Mangskau  
David & Michaun Marcoux  
John Martin & Peggy O'Toole-Martin\*  
Marty & Sarah McQuiston  
Curtis & Mary Meier  
Joseph Messick\*  
Bernward Goettke & Robin Molella\*  
Gloria Neperud  
Presh Niemi  
Bernard & Julie Nigon\*  
Reed E Nordyke  
Steven Norgaard  
Megan M O'Byrne  
Eric & Aba Ofori-Atta  
Pam & John O'Neill\*  
Anneliese Opitz\*  
Mark & Jeri Ostrem\*  
Tamra Parsons  
John & Roxanne Pederson\*

Ken & Rosemary Persons\*  
Dawn Rainey\*  
James Randle\*  
Matt & Melissa Raveling  
Craig & Brenda Reichel\*  
Chad & Jennifer Ridgeway  
Gayle & Doug Rock  
Dr Daniel Rohe\*  
Phillip Rossman  
Walt & Sarah Rothwell\*  
Lynne Ryan\*  
Laura Sandwick\*  
Gregory Sauve  
Tim & Susan Scanlon\*  
Mike & Anne Schletty\*  
Wally & Gloria Schlink\*  
Barbara Schmerbauch  
Bradley Schmidt\*  
Dan & Lynn Schmitz  
Mark & Melinda Schroeder  
Gayle Shore\*  
Andrew & Jennifer Shulha  
Diane M. Simpson\*  
John G Smith & Jane E. Smith  
Matt & Carolyn Sogla\*  
Michael Soper  
James Sorenson  
Patrick Spinler  
Todd & Martha Stevens  
Jim & Kathy Stickney  
Patty Stricke\*  
Jennifer Teske  
Pamela & Michael Thieke\*  
Alan Thomas  
Hadley Thompson\*  
Bjorg Thorsteinsdottir & Bo Enemark

Madsen MD  
Jonathan & Tricia Torrens-Burton  
Stephen & Keri Trenkner  
Tam VanRyswyk  
Carolyn Rohrer Vitek  
Randall Vrabel\*  
Deborah West\*  
Jennifer Westendorf  
Cynthia & Steven Wiese\*  
Chuck & Linda Willihnganz\*  
Michael Wills  
Sandra Woolley\*  
Peter & Diane Wottreng\*  
Pamela Wright\*  
4 Anonymous  
5 No Recognition Name

## BUILDER

Janice Aaker  
Lianne Adamson-Riebow  
John & Nola Aderton\*  
Christopher & Melody Ainsworth  
Rob & Heidi Alberts\*  
Rob Alberts  
Jennifer Albright\*  
Amy E Alexander  
Eric Alleckson  
Ranya Alrawi  
Cheryl Anderson  
Jennifer L Anderson  
Ryan Anderson  
Stephanie Anderson  
Rich & Jan Anderson  
Grace N Angelondous



Bill & Jodi Armstrong  
Caroline Arpin  
Kathleen Asay  
Darryl Ash\*  
Michael Attewell  
Crystal Bain  
Jessica Chavey  
Irina Bancos  
Duane & Susan Bartels  
Kathy & Paul Bartemes  
Mary Bartholet  
Kim Baumgartner\*  
Amy Becker  
Pamela Becker  
Susan Bee  
Janet Befort  
Robert & Deborah Bendzick\*  
Jennifer Bennett  
Lisa Bennett  
Catherine A Benson\*  
Anne & Carl Berberich\*  
Angela Beres  
Jolene Berg  
Michele Berndt  
Charles S Bierman  
Haraldur Bjarnason  
Bruce & Jen Bjorgum  
Michael Blake  
Charlene Blanchard\*  
Joseph Bly\*  
The Goodners  
Donald & Pat Borcharding\*  
Beth Borg\*  
Erv Borgen  
Rosanne M Boser  
Lee & Linda Both

Jon Bowman  
Scott J & Lisa J Boyum  
Joline Brandenburg  
Richard Breen  
Merri Bremer\*  
Roxanne Brennan  
Christopher & Stacey Brent  
Vince & Jennifer Brickley  
Mark & Amy Brown  
Mary Brown  
Richard & Nancy Brubaker\*  
Stephen & Shari Brumm\*  
Daniel Buchanan\*  
Heide & Helmut Buettner\*  
John & Suzanne Bundrick  
Jan & Bruce Burnes  
Shawn & Shelly Buryska\*  
Jeanne Byron & Family  
Daniel & Julia Caesar\*  
John & Shelly Caldwell  
Shelly Caldwell  
Nicole Callahan  
Barry Camerer\*  
Gary Campbell\*  
Heidi Campbell\*  
Marylee Campion  
Sara Carlson  
Haddon & Damita Carryer  
Lori Casey  
James & Jane Cerhan  
Daniel & Sinéad Chick  
Jason Chilson  
Chunhee Richard & Kyung Mi Choo  
Glenn Christian  
Patricia Christofferson  
Jodi & Dylan Christopherson

Kathryn Cieslak  
Heather Clark  
Norman Clark  
Karl & Susan Clausen  
Courtney Clayton  
Karen Cocker\*  
Renee Cocker  
Emily Colbenson\*  
Erin Collins  
Kevin Connor  
Melissa Connor  
Linda Cooper  
Karl Corrigan  
Debra L Cox  
Dan & Shawn Craig\*  
Angela Cramer\*  
Ms Kimberly Kramer  
Sarah Crane  
Susan & James Crawley  
Julie Cunningham\*  
Michael Curler  
David & Mary Curtis  
Susan Curtis  
Michelle Daiss\*  
Barbara Dallavalle  
John & Shannon Davies  
Aaron & Amanda Davis family  
Amy & Christopher Davis  
Richard Dean\*  
Heidi Deno  
Mary Jeane Dery\*  
Brian DeSouza  
Molly Destro Borgen  
John & Lori Deutschman  
Rick & Betty Devine\*  
Joshua Dicke



Paula Dickinson\*  
 Katherine Dickson  
 Ann Discher  
 Jeff Doherty\*  
 Craig & Judy Dokken  
 Vincent Donahoe II  
 B Donelan-Dunlap & J Dunlap  
 Haidong Dong  
 Ryan Dorenkemper  
 Kathy Doty  
 Joshua Dreher  
 Joseph & Lindsay Duda  
 Mary Easterling  
 Julie Eastling  
 Jon & Dawn Eckhoff\*  
 Shirley Edmonson\*  
 Jason S. Egginton, MPH



Carolyn Eichenlaub  
 Marla Einck\*  
 Sharon Elcombe\*  
 Jeffrey Ellerbusch\*  
 Byron Ellingson  
 Julie Emerson  
 Gregory W Epsom & Dr Kristin L Garlanger  
 Emma Erickson  
 Steven Evans  
 Faiman Family  
 Adam Falk  
 Carol Fallon\*  
 Julie Faust  
 Bob & Kate Featherstone\*  
 Jeremy Felder  
 Joel Felmlee PhD  
 Scott & Darci Fenske\*  
 Jeramy Fischer  
 Carol J Fitzgerald\*  
 Bethanie Flattum  
 Justin Flattum  
 Gayle Flo  
 Sandra Houle & Bruce Fossum  
 Marty & Marissa Frana  
 Alfred & Cathy Fraser  
 Richard Freese  
 Todd French  
 Karen & Jerry Fuerstenberg  
 Casey & Dana Funk\*  
 Tony & Brenda Fyles\*  
 Bridget M Gabrielson\*  
 Chris & Marne Gade\*  
 David Gaio  
 Dr Ognjen Gajic & Vladana Gajic-Zoric  
 Lydia Gammell  
 Terri Gardner\*  
 Jennifer Garness\*  
 Jerome & Elaine Garry

Clifford & Patricia Gastineau  
 G Richard & Pat Geier  
 David Geschwind\*  
 Jeanne Gibson  
 Pete Giesen\*  
 Eyob Girma  
 John & Sonia Gisvold\*  
 Donald & Stephanie Glascock  
 Linda Godsill  
 Sandra & David Goslee\*  
 Travis & Jaime Gransee  
 Paula Graskamp  
 Julie Graves  
 Stella Greeley  
 Kyler & Amanda Green  
 Joyce Greer\*  
 Terry & Lisa Grendahl  
 Jared Groehler\*  
 Scott Groth\*  
 John Gunnon\*  
 Jeanne Guyse\*  
 Paula Gyura  
 Thomas & Mary Jo Habermann  
 Deb Hagen-Moe  
 Valerie Halling  
 Denise Hamilton  
 Pamela Hammond\*  
 Darrel & Pat Hanks  
 Julie & Steve Hansen\*  
 Eric & Theresa Hanson  
 Kaloa & Walter Hanson\*  
 Michele & Gregory Hanson  
 Mark Hardesty  
 Warren T Harmon\*  
 Helen Hart  
 Jill and Garry Hart  
 Tom Hartman  
 Julie Hebert

Lois Heeringa\*  
 Peter L Heldt  
 David Hellstern  
 Hal & Holly Henderson  
 Julie Henry  
 Jeff & Jeannine Hensley  
 Donald Hensrud & Natasha Matt-Hensrud  
 M. Herman  
 Pat & Jim Heydon\*  
 Doug H  
 Dr Daniel Hilliker & Teresa Allred  
 Becky & David Hinchley\*  
 Susan Hind  
 Richard & Amber Hinds  
 Heather Hockert  
 Bryan Hoerl\*  
 Barbara Hollar\*  
 Amanda Holloway  
 Natalie Holst\*  
 Christopher Hostak  
 Marlina Hui\*  
 Charity Hunt  
 Christine Hunter  
 Thomas Huntley  
 Jeffrey Ihrke\*  
 Carol Immermann  
 Dean Ingram  
 Mark & Renata Iverson  
 Kim Jacobson\*  
 Barbara Jerabek  
 Dragan Jevremovic  
 Cary & Kathy Johnson\*  
 Dave & Maren Johnson  
 Jasmine Johnson  
 Kayla Johnson  
 Kenneth Johnson  
 Leroy Johnson  
 Mary Jane Jones

John Jongbloedt  
James Jorgenson  
Janine R Kamath  
Joseph Kane  
Revelee Kaplan  
Greg & Sue Kapraun\*  
Tammy Karp\*  
David & Elizabeth Katzelnick  
Gary Keeney  
Michael Kehoe  
Lori Keith\*  
Sandra Kelley  
Laurel J Kelly  
Susan Kennedy  
Nathan & Ruth Kerl  
Beth Kiefer & Richard Augustin\*  
Teresa & Richard Kimlinger  
Angela Kinneberg  
William J Kirtz  
Robin R Klebig  
Kleis Family  
Bryan Klimek  
Mary Knetter  
Deborah & David Knopman  
Steve & Terri Knudson\*  
Matthew & Mamisoa Knutson  
Mark Koch  
Brenda Kochevar  
Scott Koepsell  
Karen Koka  
Amy Kolbe  
Dave & Fran Kooistra\*  
Sandra Kopp

Jenine Koziolk  
Philip Krautkremer\*  
Belinda Krenik\*  
Carrie Krieger  
Roy & Barb Kriesel\*  
Mary Kristo\*  
Jake Kugel  
David Kujak  
Martha Lacy  
Barry Lafavor  
Val Langworthy  
Dr & Dr Lanzino  
Sara Lassila  
Lianne LaTorre  
Laurie Ivins Leaf\*  
Dennis & Sandy Leavelle  
Matthew Lee\*  
Steve & (Joan) Rose Lee  
Amy Leeser  
B Leibovich  
Janet Leisen  
Michelle & Tim Liepold Sr\*  
Katie & Dustin Lindahl  
Karen Lockington  
Edward & Beth Loftus  
Mathew & Jennifer Logelin\*  
Monica Loppnow  
Shawn Losee\*  
Michelle LoTurco  
Francie Lovejoy  
Lynn Loynes\*  
Claudia Lucchinetti & Mathieu Wiepert  
Todd & Lorie Luedke  
Connie & Scott Luedtke  
Susan Lyman  
Rose Mader\*  
Amy & Dave Mahon

Laure & Steve Maki  
Michele Manthey Saack  
Julie Manville-Camp  
Robert & Julie Maroo\*  
Jim & Cindy Martenson\*  
Jesse Martin  
Marjorie & Michael Martin\*  
Ross Martinson  
Mario Mata  
Margo Mathre  
John Matulis  
Peter Maves  
Dr Daniel J McCormick\*  
David Mc Fadden  
Patrick McCabe  
Heather Mc Cormack\*  
Sean McEligot & Julia Gerak McEligot\*  
Kim McGarry\*  
Corey & Liz McGlone  
Margery Mc Intire  
Matthew & Angela McKay\*  
Randy McKeeman & Anita DeAngelis\*  
Andrew McKeon  
Mark McNiven  
David Mead  
Douglas & Mary Meine\*  
Jane Meineke  
Thomas Meloy  
Walter Menning\*  
Judi & Dan Mersel  
Michelle Mielke  
Matthew Mikkalson  
Eric Miller  
Jennifer Miller\*  
Julene Miller\*  
Terry & Nancy Miller  
Steve & Grace Moen





Cynthia Molko  
Ryan & Megan Moore  
Michael & Denice Morehead\*  
Mark Morrey  
Colleen M Musolf  
Tony Narr  
Karl & Karen Nath  
Rodolfo Naul  
Jerry & Billie Needham\*  
Christopher D Nelson  
Janell Nelson  
Kerry Harmon-Ney\*  
Brad Niebuhr  
Todd Nienaber  
Beth Nienow\*  
Todd & Diane Nippoldt\*  
Joe Nix  
Karen O'Callaghan  
Erin O'Brien  
Jae K & Terry H Oh\*  
John C & Alexandra R O'Horo  
Cindy Oleson  
Dr Mark & Maria Olsen  
Stephanie Olson  
Barb Orłowski\*  
Lynn M Padley  
Stephen & Theresa Parker  
Sandra Passe  
Melissa Payne  
Stephen Paynic  
Ellen Pearson  
Prema Peethambaram  
Scott & Amanda Peloquin  
John & Pat Perkins\*  
Rich & Shirley Peter\*  
Steve G Peters MD  
Greg, Jacque, Meaghan & Josie Peterson

Jane Peterson  
Jennifer Peterson  
Robert Pfeffer  
Julie Phan  
P Pianosi  
David & Jane Piepgras  
Karlyn Pierson  
Steve Pleschourt\*  
Timothy B Plummer\*  
Nicholas Pohlman  
Devon Post  
Gerald & Mary Price  
Mike D Price\*  
Julie Prigge  
Bobbi Pritt  
Erik Propotnik  
David Quam  
Joan & Greg  
Randy & Denise Quint  
Kindra Ramaker  
Laura Randolph\*  
Laureano Rangel  
Don & Gay Reed\*  
Guy S Reeder  
Julie Reeve-Martin  
Laura Regner  
Bruce & Luann Remme\*  
Jim Renn  
Kathleen Rhodes  
Sean & Darci Rice  
Mark & Coleen Rieder\*  
Jose L Rivas\*  
Robert Rizza  
Heidi Roberson  
Kirk & Lisa Rodysill\*  
John & Martha Roemer\*  
Veronique Roger

Tod Rogers  
James & Anita Rogers\*  
Wilfredo Roman Catala  
George Romano  
Shirley Roque  
Joan & Marvin Rose\*  
Charles B Rosen, MD  
Kristine Rossman\*  
MaryEllen Roubik  
Mark & Tonia Ruport\*  
William J Ryan  
Karen Salz  
Nathan D Sanders  
Philip Sanders  
Venkata Sanjamala  
Katrina Saterdalen  
Bob & Julie Sauer\*  
Paul & Maggie Scanlon\*  
Andrea Schammel  
Carla Scheepstra  
Sarah Schettle  
Scott Schley  
Dave & Lucy Schmidt\*  
Diane C Schmidt\*  
Julie A. Schmidt  
Michelle Schmitt  
Fallen Officer Shawn Steven Schneider  
Terry Schoonover\*  
Jennifer & Robert Schubert  
Rose & Jason Schuh-Dodge  
Troy Schuler  
Billie Schultz  
Carolyn Schultz  
Darcie & Joe Schultz  
Nina & Fritz Schwenk  
Noel Sederstrom  
Mary Seeger\*

Penny Seifert  
Dana Sellnow-Njus  
Theresa Severson  
Phyllis A Sexton  
Barbara Seydel\*  
Neel & Meera Shah  
S Shannon  
Lynda & Frank Sharbrough\*  
William & Heidi Shaughnessy  
Gladys Shea  
Jackie Sheeran  
Jane & Curt Shellum\*  
Steven Sherry  
Cheolsu Shin  
James & Carol Shipman\*  
Gary Sieck  
Sandra Simar  
Kimberly Simons  
Kim Sin  
Andrew Sitter  
Joseph & Julia Skalski  
John Skiffington  
Slavins  
Lynne Sloan  
Melvin Smestad  
Emily Smith  
Hugh & Aynsley Smith  
Rodney Smith  
Diane Dahm MD & Jay Smith MD  
Allen & Darcy Snyder  
Kristin & Peter Somers  
Su Spafford\*  
Jeannie Sperry  
Steven Spohn\*

Stephen & Anne Sponsel\*  
Rebecca Sprenger  
RM & Dave Sprenger\*  
Kathryn Springer  
Mary St Marie\*  
Leslie Stauber  
Jeffrey Stearns  
Steven Stenhaus\*  
Susan Stewart & Doug Gras  
Brad & Tricia Stiller  
Peggy Stimpert  
Mark Stopyro  
Diane Storm  
Roger & Annie Stratton  
David and Rachel Strauss  
Strissel Family  
Rich Stroebel  
Jeff Strommen  
Nicole Stundzia  
Margaret Sutton  
Mary A Svoboda  
John & Andrea Swanson  
Tanja Taff Morello & Fabio Morello  
Barbara Tatzel  
Jason & Carla Tentis  
Kent & Jacqueline Thielen\*  
Paul & Barb Tieskoetter\*  
R T Tilbury  
Farris & Colleen Timimi  
Rochelle Timmer  
Kevin Toft  
Kevin Torgerson\*  
Stacey Tovar  
Morgan Towell  
Charles Treder\*  
Susan Trulson  
Jeffrey Tunnell

Troy & Desiree Tynsky  
Sue Underdahl \*  
Sudhi Upadhyaya  
Joel Urch  
Patty Utech  
Janine Van Ree  
Tom & Jill Vandenheuvel  
Robert A VanDeVoorde  
Laura VanMeter  
Emily & Harold Vetter\*  
Roger Vick  
Rebecca Vlach  
Scott & Wendy Von Wald\*  
Mary Vorndran  
Mike & Becky Waara\*  
Paul Walding  
Brenda Walsh  
Lisa & Alan Walther\*  
Alisa Walz-Flannigan  
James Ward  
Melissa Ward  
Scott Watson  
Karen M Weavers  
Karen Weber  
Karel Weigel\*  
Brian & Vivian Weinshenker\*  
Heather Wengert  
Jodie & Bob Westland\*  
John Wheeler  
Trisha White\*  
Kevin Whitford  
Harlan & Earlene Wickre\*  
LaChelle Wieme  
John & Debra Wilkinson  
Mike & Barbara Willard\*  
Aileen Williams  
Donald Williams

Jodi Williamson  
Jacque & Mike Wilson  
Linda Wilson  
William E Wimsett\*  
Jeffrey Winters  
Brian & Cheryl Winters  
Stephanie & Keith Witwer  
Jerry & Mary Anne Wolesky  
Joyce Wood\*  
Woodruff Family  
John Woollard  
Tracey Wozniak Rutherford  
Julie Wrubel\*  
Ping & Bosheng Yang  
Jim Youdas\*  
Robin Zangarine  
Susan Ziemba  
David & DiAnne Zill\*  
Elizabeth & Aaron Young  
Laurie Zoecklein\*  
Jean Zuroski  
42 Anonymous  
74 No Recognition Name



30



**JEROME FERSON**

UWOC PRESIDENT

*“Your investment in our community  
has resulted in life-changing events  
for individuals in need.”*

## LEADERS IN GIVING RECOGNITION LEVELS

- Alexis de Tocqueville Society: \$10,000+
- Diamond: \_\_\_\_\_ \$7,500-\$9,999
- Emerald: \_\_\_\_\_ \$5,000-\$7,499
- Platinum: \_\_\_\_\_ \$3,000-\$4,999
- Gold: \_\_\_\_\_ \$2,000-\$2,999
- Silver: \_\_\_\_\_ \$1,000-\$1,999
- Bronze: \_\_\_\_\_ \$750-\$999
- Builder: \_\_\_\_\_ \$500-\$745

# THANK YOU FOR BEING BOLD & LIVING UNITED

*Memorial and Tribute gifts are given in honor of a loved one or friend as a lasting remembrance of helping others in partnership with United Way.*



### GRANTS

Peoples Energy Cooperative  
IBM Corporation  
Otto Bremer Trust  
Carl & Verna Schmidt Foundation



### GIFTS IN MEMORY OF

Jim Walt  
James Fleck  
Georgia Scholz  
William E Miller  
John Lyden  
Dr Gisela Grebe-Johnen  
Gladys Stephan



### GIFTS IN HONOR OF

Wilson Lee  
Ellie Dickinson  
Paul & Susan Rohde  
Charles Coddington  
Amy Kromminga  
Pamela Wright

### LIFETIME GIFTS - HOPE LEGACY SOCIETY

Jeffrey Allman	Anne & Carl Berberich	Janet Notheis Volkmar -
Lois A Jorstad Trust	Maureen Gwynn	Endowed Fund for Kids
Dick & Joanne Rosener	Emily Colbenson	Judy & Jim Sloan Foundation
Donald R Halley	Betty A Hutchins	Sue & Doug Luebbe
Larry & Dr Wendy Shannon	Bonita & Russell Schultz	1 Anonymous

*We endeavor to ensure the accuracy of this Leaders in Giving list of donors. If your name is incorrectly listed in any way, please accept our apologies and bring the error to our attention so our records may be corrected. To make corrections, contact us at Donor Stewardship, (507)287-2000 or rd@uwolmsted.org.*



**United Way of Olmsted County**  
903 West Center Street, Suite 100  
Rochester, MN 55902

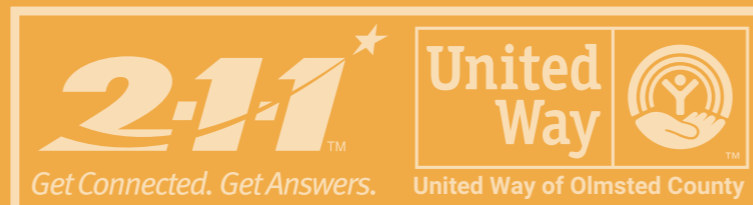
Email: [uwoc@uwolmsted.org](mailto:uwoc@uwolmsted.org)  
Phone: (507) 287-2000

NONPROFIT ORG.  
U.S. POSTAGE PAID  
ROCHESTER, MN  
PERMIT NO. 39

**ADDRESS SERVICE REQUESTED**

If you or someone you know needs help call United Way's resource referral line 2-1-1 to learn about assistance available in our area.  
DIAL 2-1-1 or 1-800-543-7709

**BE BOLD. LIVE UNITED.**



903 WEST CENTER STREET SUITE 100. ROCHESTER MN, 55902 - PH.507-287-2000  
PLEASE VISIT OUR WEBSITE AT [WWW.UWOLMSTED.ORG](http://WWW.UWOLMSTED.ORG)